

# **MAT Biopharma**

**Journée européenne:**

**Les sciences du vivant et la participation des  
PME aux appel à projets du 6ème PCRD**

**- May 31<sup>st</sup> 2005 -**

**Franziska Possmayer, PhD  
Business Development**

# Introduction

- Company developing antibody therapeutics for the treatment of hematological cancers, pancreas, liver cancer & metastatic melanoma
- Founded in 2000
- Staffing : 15
- Based in Evry, south of Paris

# Business Concept

- ➔ Development of products in hemato- and oncology:
  - internal research
  - in-licensing of early stage products from research institution
- ➔ Out-license its products after phase I/II clinical trial to other biotech or pharmaceutical companies
- ➔ Services to biotech /pharma: HT antibody screening and identification

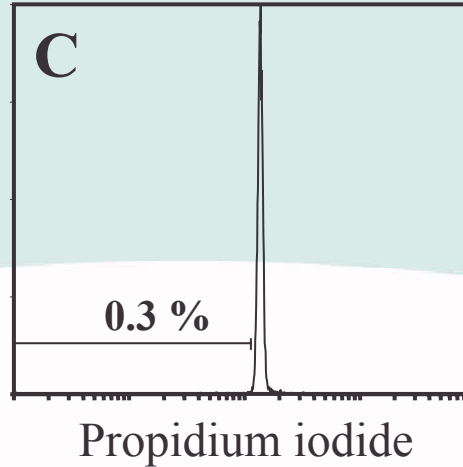
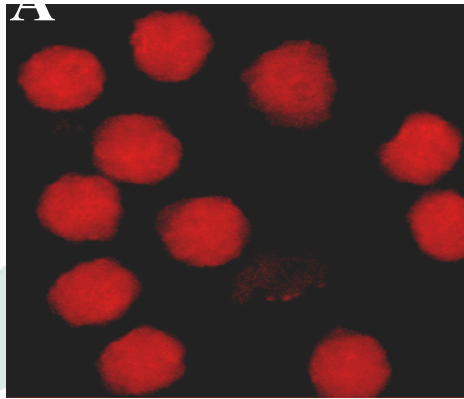
# Product pipeline

<b>Product</b>	<b>Indication</b>	<b>Stage</b>
<b><sup>90</sup>Y – polyclonal IgG (Ferritarg P<sup>®</sup>)</b>	<b>refractory Hodgkin's disease</b>	<b>To enter Phase II / III</b>
<b><sup>90</sup>Y- AMB8LK mAb</b>	<b>liver cancer pancreas cancer refractory Hodgkin's disease</b>	<b>Pre-clinical</b>
<b>anti-CD44 mAb</b>	<b>acute myeloid leukemia (AML)</b>	<b>pre-clinical</b>
<b><i>anti-CD5</i></b>	<b><i>chronic lymphocytic leukemia (CLL)</i></b>	<b><i>R&amp;D</i></b>
<b>anti-CD71</b>	<b>metastatic &amp; choroidal melanoma</b>	<b>R&amp;D</b>

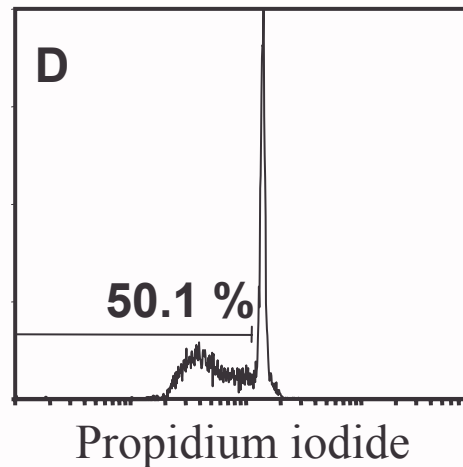
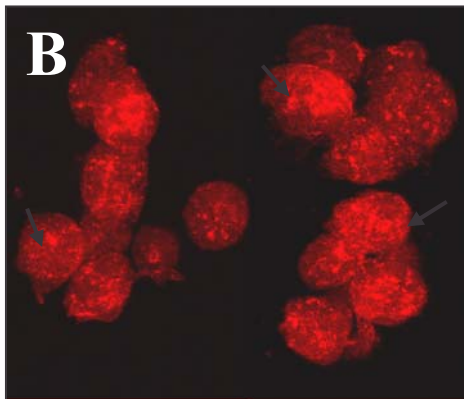
# **Anti-CD5 Project**

**Induction of Apoptosis in  
Chronic Lymphocytic Leukemia (CLL)**

# Anti-CD5 antibody



no anti CD5



+ anti CD5

## **A project with .....**

- Pre-existing know-how: worldwide exclusive license
- Development of therapeutic antibodies
- Promising results

## **and many needs ...**

- Experience in other topics (genetic engineering, molecular design, vectorisation, in vitro models, toxicology studies)
- Financial resources
- Project co-ordination

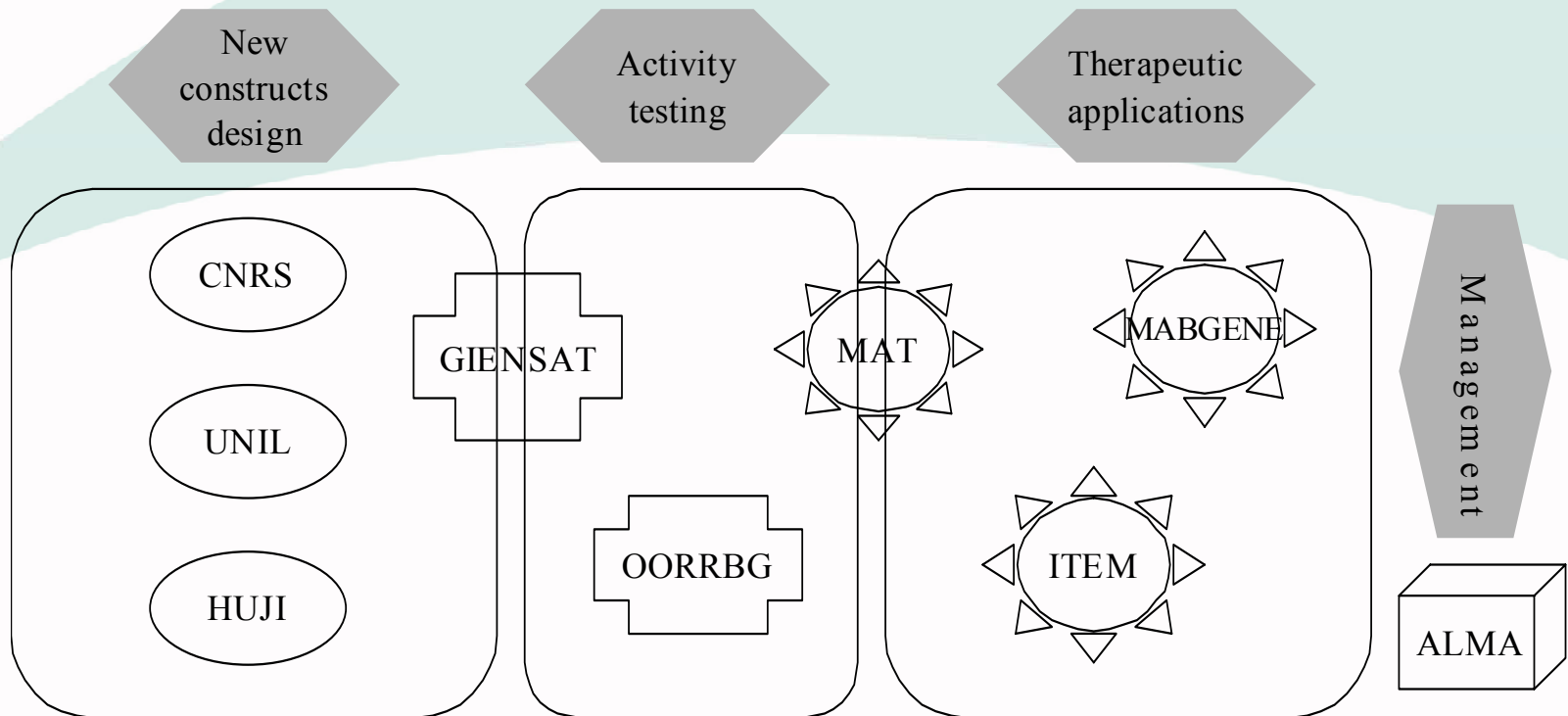
## **Solution : STREP from the EC ?**

- Programme: Life Sciences, genomics & biotechnology for health (FP6-2004-LIFESCIHEALTH)
- Area: Targeted delivery of protein-based drugs
- Project: **B**ispecific **M**onoconal Antibody Technology **C**oncept (BMC)
- Submission date: 16<sup>th</sup> Nov. 2004

# The Consortium

N°	Participant organisation name	Short name	Scientific team leader	Town	Country
1	Monoclonal Antibodies Therapeutics	MAT	Dr. Jean Kadouche	Evry	F
2	University of Lausanne	UNIL	Prof. Jean-Pierre Mach	Lausanne	CH
3	Groupement d'Intérêt scientifique Groupe Interdisciplinaire d'Etude de Nouvelles Stratégies Anti-Tumorales	GIENSAT	Prof. Christian Berthou	Brest	F
4	Centre National de la Recherche Scientifique	CNRS	Prof. Martine Cerruti	Saint Christol Lèz Alès	F
5	Hebrew University of Jerusalem	HUJI	Prof. Simon Benita	Jerusalem	IL
6	Azienda Ospedaliera-Ospedali Riunti di Bergamo	OORRBG	Dr. Josée Golay	Bergamo	I
7	Fraunhofer Gesellschaft für angewandte Forschung e.V.	ITEM	Prof. Borlak	Hannover	D
8	Alma Consulting Group	ALMA	Dr Céline Germain	Lyon	F
9	Mabgene SA	MABGENE	Mr Patrick Henno	Alès	F

# Complementary activities within the partnership



# Relevance

- Innovative aspects: monoclonal antibodies acting both as a **drug & targeted delivery system** - Development of new recombinant bispecific /bifunctional molecules as therapies for cancer (B-CLL)
- Objective: development of new, more safe and effective drugs, by using cutting edge genomic & proteomic technologies

# Project resources

TOTAL BUDGET	3 263 928 €
TOTAL GRANT	2 491 351 €
% GRANT / BUDGET	76,33%
TOTAL PERSON.MONTHS	527,4
COST PER PERSON.MONTH	3 329 €
Number of partners	9
Number of countries	5

## Budget per type of organization

	Budget	Grant
Large companies	0,00%	0,00%
SMEs	22,87%	<b>16,68%</b>
RTDs	74,67%	80,10%
Others	2,46%	3,22%

**Thank you very much**