



# Development of cancer-specific nature-derived drugs

**Oseo Anvar / Amorce Europe – March 21st, 2005**



# Products target mitochondria of cancer cells - no effect on mitochondria of normal cells

## Cytochrome C release by SPL 2101:

- Normal cells:



- Cancer cells (Molt 4):



- Destroys mitochondria of cancer cells
- No effect on mitochondria of normal cells



# Efficient *in vitro* AND *in vivo*

Melanoma (B16) bearing mice

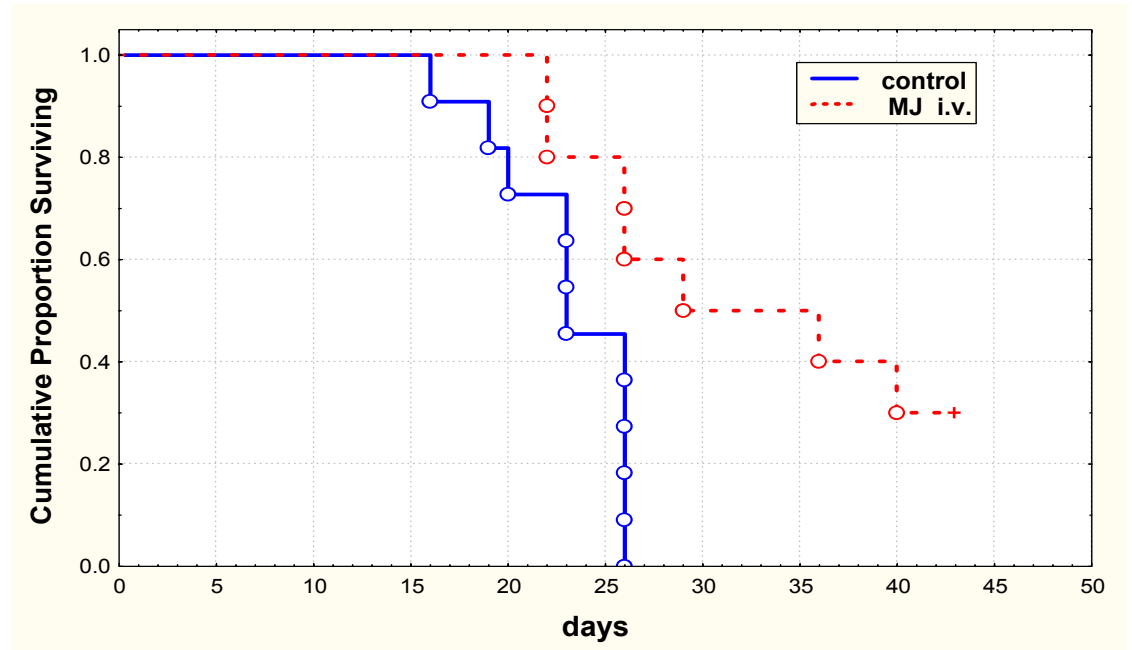
SPL 2101 administered i.v.

75 mg/kg

n=11 P<0.007

No general toxicity

at this dose level



**Increases survival of animals with chemoresistant and metastatic cancer**



# The dream product:

- **Active against a wide range of solid tumours**
- **Synergistic with existing chemotherapies**
- **Administered orally**
- **Daily between 2 infusions of chemotherapy**
- **Active against chemoresistant tumours**
- and of course**
- **Without dose-limiting side-effects !**