



MERIL

MAPPING OF THE EUROPEAN
RESEARCH INFRASTRUCTURE
LANDSCAPE

***EuroRisNet, FP7 National Contact Points (NCP) meeting
05 July 2011, Brussels***

Paul Beckers, MERIL Project Manager



Outline

1. Background

2. What is MERIL?

2.1 Definition of RI

2.2 Why an inventory?

2.3 Who are the stakeholders?

3. Work Packages, current status and timeline



1. Background

- **EC/ESF/EUROHORCS RI Portal (2006)** 30% of RIs of pan-European relevance (www.riportal.eu)
- **EUROHORCS/ ESF Road Map (2009)** 10 Actions to strengthen ERA among which Action N 8 aims 'to develop shared funding and exploitation of Research Infrastructure' mandated to DFG
- **Member Organisation Forum on Research Infrastructures** (launched 11-12 January 2010); chaired by Dr. Johannes Janssen (DFG); consists of 4 Working Groups:
WG1: Access and Standards; WG2: Funding and Evaluation; WG3: Mobility and Networks; WG4: Mapping = MERIL Project
- **'Europe 2020 Flagship Initiative Innovation Union' communication of the European Commission (2010)** endorses the Research Infrastructure as corner-stone of ERA



2. What is MERIL?

The MERIL project

Mapping of the European Research Infrastructure Landscape

- two year project,
- starting from 1 October 2010
- supported by the European Commission FP 7
Contract # 262159
- coordinated by the European Science Foundation

- aims to achieve a **comprehensive inventory** of research infrastructures of **European relevance** and to make the information publicly available through an **interactive online portal**.



2.1 Definition of RI

A European Research Infrastructure is an **facility** or (virtual) **platform that provides the scientific community with resources and services to conduct top-level research in their respective fields**. These research infrastructures can be **single-sited or distributed** or an e-infrastructure, and can be part of a national or international network of facilities, or of interconnected scientific instrument networks.

The infrastructure should:

- offer top quality scientific and technological performance, that should be recognised as being of European relevance
- offer access to scientific users from Europe and beyond through a transparent selection process on the basis of excellence
- have stable and effective management



2.2 Why is it important to have an inventory of research infrastructures?

MERIL will be a **unique source of information** about all the principal research infrastructures throughout Europe and as such would:

- Help the **scientific community** to identify and gain access to a wide range of resources, services and facilities.
- Allow **policy makers** to assess the state of research infrastructures throughout Europe to pinpoint gaps and possible duplications and make decisions about where best to direct funding.
- Encourage **cross-border and cross-sector collaboration** and more efficient use of resources within the European research community.
- Promote **individual research infrastructures** by raising their profile and fostering a greater sense of partnership across Europe.
- Contribute with this **state-of-the-art analysis** to the planning for future needs in cooperation with the European Strategy Forum on Research Infrastructures(ESFRI).



2. 3 Who are MERIL Stakeholders?

MERIL Governance consists of a **Steering Committee** of:

Chairs or delegated Representatives of ESF Scientific Committees and Expert Boards

and representatives of

EUROHORCs,

European Commission,

European Strategy Forum on Research Infrastructures (ESFRI),

European Association of National Research Facilities (ERF),

Research Infrastructure Programme Committee

Member Organisation Forum on Research Infrastructures

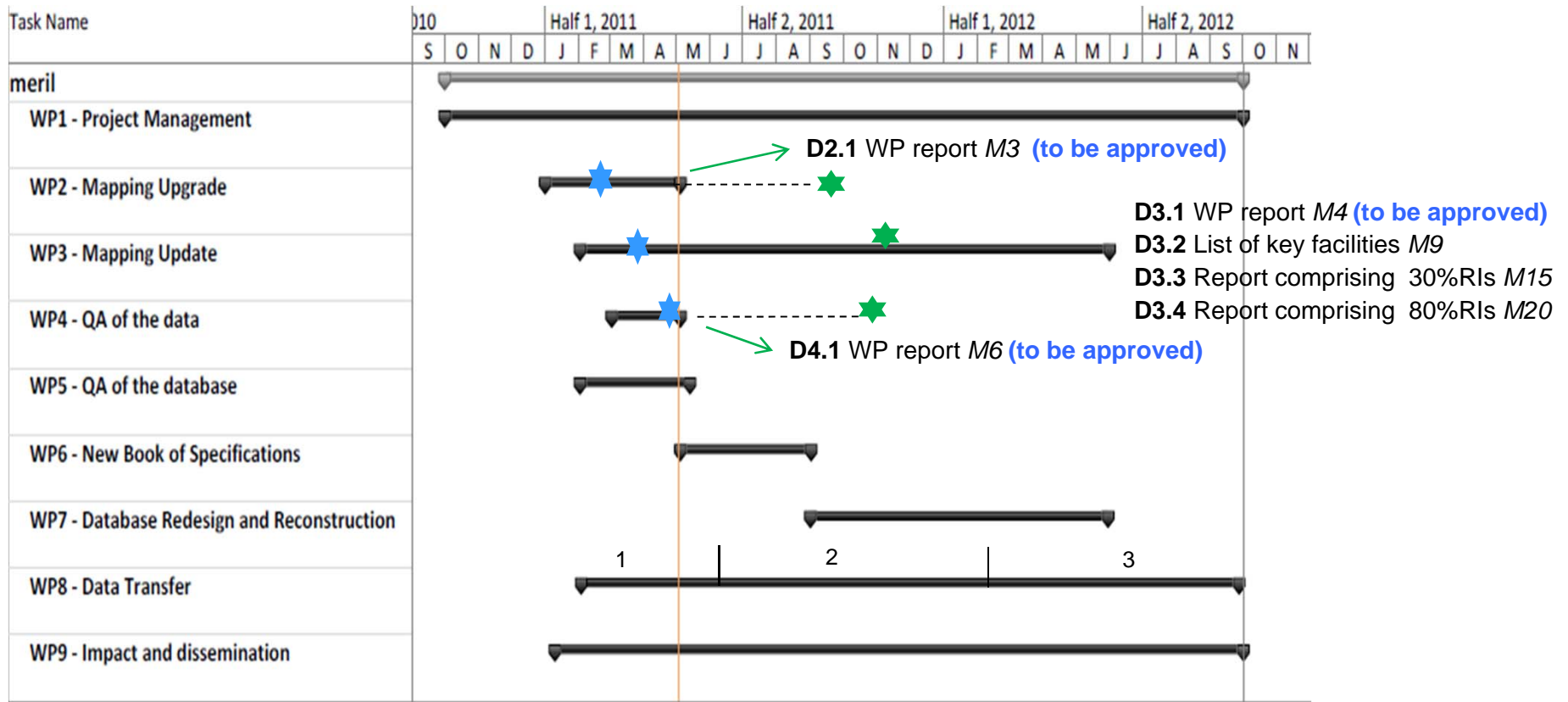
Ministries.

At the operational level, experts who are individual scientists representing the ESF Scientific Committees are constitutive of the MERIL **Science Advisory Board**.



3. Work Packages and timeline

Work Packages 2, 3 & 4

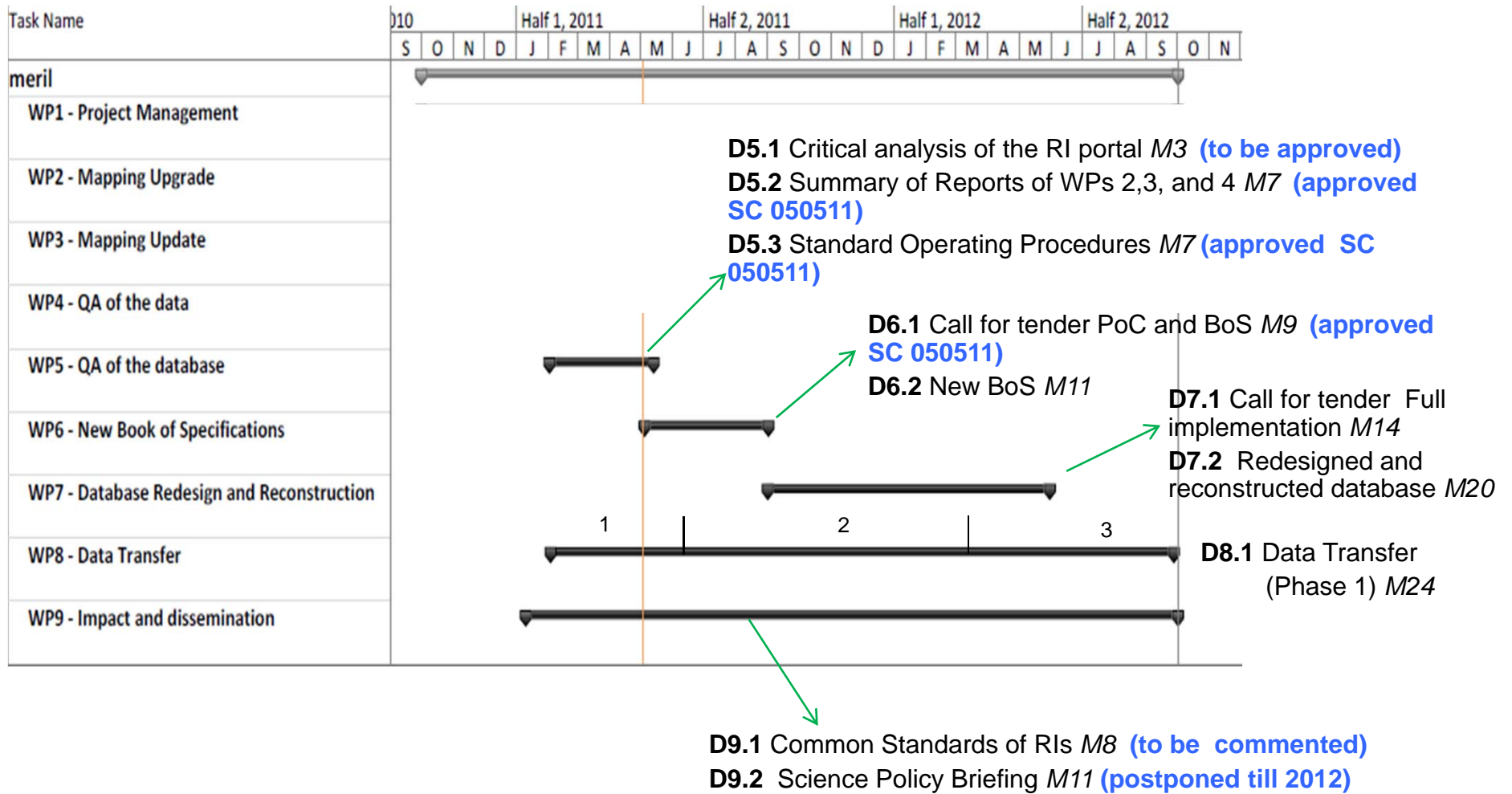


- ★ Meetings held
- ★ Meetings to be scheduled



3. Work Packages and timeline

Work Packages 5, 6, 7, 8 & 9





3. Work Packages and timeline

SC Decisions; Scientific Domains/ Categories

Scientific Domains:

1. Information Science and Technology
2. Biological and Medical Sciences
3. Earth and Environmental Sciences
4. Physics, Chemistry, Material Sciences & Mathematics
5. Astronomy and Astrophysics
6. Engineering
7. Social Sciences
8. Humanities and Arts

& Grand Challenges as currently defined in the EC Green Paper (not Scientific Domains)

1. Climate change
2. Energy
3. Security
4. Demographic ageing
5. Resource efficiency
6. Challenge 6 (Humanities)



3. Work Packages and timeline

SC Decisions; Minimum data set

- Name of the Research Infrastructure
- Acronym,
- Website
- Location
- Scientific domain
- Type of RI
- RI category
- Services
- Equipment
- Number of Users (National, Europe, International)
- Year of start of operation
- Key words

Reference to the identification source [hidden]



3. Work Packages and timeline

SC Decisions; Common set of criteria for RIs

MERIL will promote the use of a common set of quality criteria as good practice in research infrastructures evaluation in Europe:

- 1) Scientific & Technological excellence
 - 2) Management
 - 2.1) Access Policy
 - 2.2) Services
 - 2.3) Quality Assurance
 - 2.4) Funding
 - 3) Governance
 - 4) Capacity to generate impact
 - 5) Education and training
- A dedicated workshop on the desired validation process of European relevance as cut-off criterion is envisaged in October 2011



3. Work Packages and timeline

Summary; which RI should be included

For the current contract:

- Research infrastructures that have been **evaluated through a national or European initiative (surveys, roadmaps, funding programmes)** on the basis of the commonly agreed definition and meet with standard criteria of:
 - scientific and technological excellence; management including access policy, services, quality assurance and funding; governance; capacity to generate impact and education and training.
- across **all scientific domains, categories and types** of research infrastructures.
- Each will be described in a **standard format** and some pre-set queries will be available.
- The aim is to provide a **limited set of relevant information and queries** that most users need on research infrastructures in Europe and a **web link** to each research infrastructure for more information.

After September 2012 at the end of the MERIL Contract:

- A validation procedure needs to be developed for research infrastructures from other sources



***Thank you for your
attention!***

www.meril.eu